

20th ANNUAL HIV CONFERENCE
of the Florida/Caribbean
AIDS Education and Training Center

May 13-14, 2011
Orlando, FL

www.FCAETC.org

Psychiatric Disorders in HIV

Glenn Tresiman, MD

Disclosure of Financial Relationships

This speaker has no significant financial relationships with commercial entities to disclose.

This slide set has been peer-reviewed to ensure that there are no conflicts of interest represented in the presentation.



20th ANNUAL HIV CONFERENCE
of the Florida/Caribbean
AIDS Education and Training Center

May 13-14, 2011
Orlando, FL

www.FCAETC.org

Objectives

- Is HIV a psychiatric epidemic?
- Can we treat the psychiatric disorders that complicate the HIV epidemic?
- Can clinicians integrate psychiatric treatment into HIV treatment?



May 13-14, 2011
Orlando, FL

www.FCAETC.org

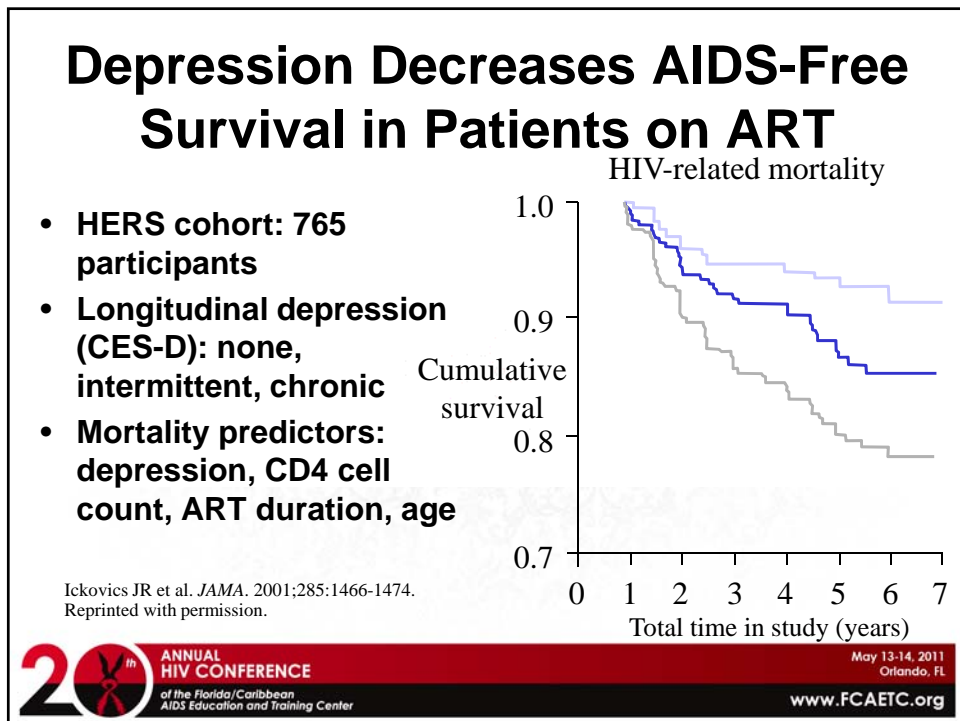
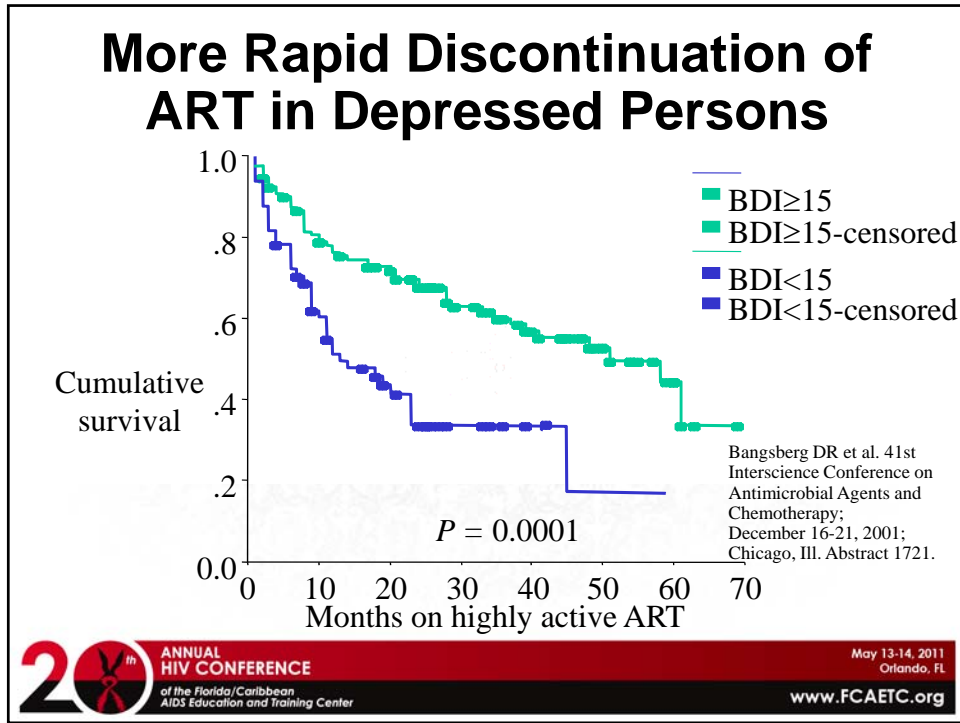
Prior research has shown that psychiatric patients

- Have increased risk of HIV
- Are less likely to receive HAART
- Are less likely to stay on HAART
- Are less likely to get an undetectable viral load
- Are more likely to die

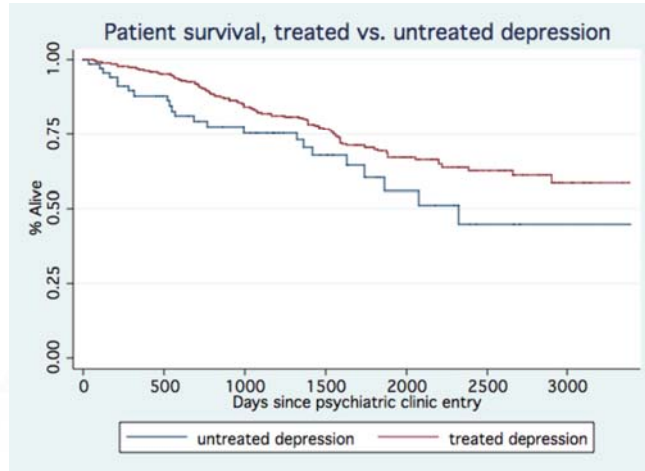


May 13-14, 2011
Orlando, FL

www.FCAETC.org

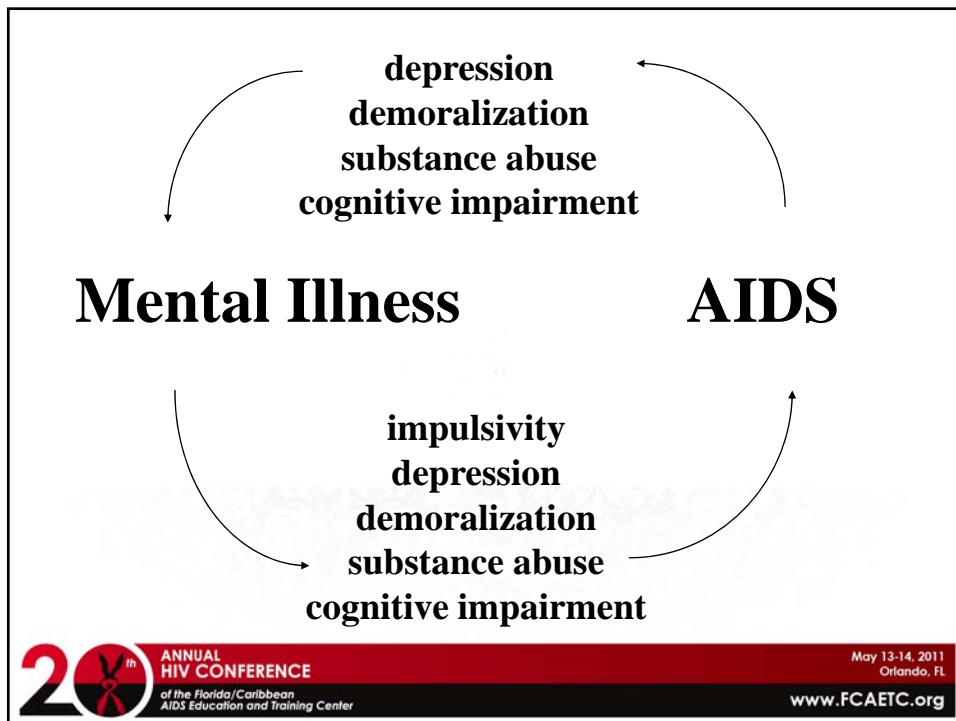


Treatment of depression improves survival



Courtesy of A. Shapiro, submitted

20th ANNUAL HIV CONFERENCE
of the Florida/Caribbean AIDS Education and Training Center
May 13-14, 2011
Orlando, FL
www.FCAETC.org



20th ANNUAL HIV CONFERENCE
of the Florida/Caribbean AIDS Education and Training Center
May 13-14, 2011
Orlando, FL
www.FCAETC.org

HIV IS A PSYCHIATRIC EPIDEMIC

- HIV increases risk for psychiatric illness
- psychiatric illness increases risk for HIV
- effective treatment for psychiatric illness can improve patient outcome
- effective treatment for psychiatric illness can decrease HIV transmission



ANNUAL
HIV CONFERENCE
of the Florida/Caribbean
AIDS Education and Training Center

May 13-14, 2011
Orlando, FL

www.FCAETC.org

Psychiatric disorders in new medical intakes

- | | |
|---|--------------|
| • Overall Axis I (non-substance abuse) | 54 % |
| • Major depression | 20 % |
| • Adjustment disorder | 18 % |
| • Substance Abuse | 74 % |
| • Cognitive Impairment | 18 % |
| • Personality disorder | 26 %* |

Lyketsos, C.G., Hutton, H., Fishman, M., Schwartz, J., Treisman, G. J., Psychiatric morbidity on entry to an HIV primary care clinic. *AIDS*; 1996; 20(3): 131-144

* unpublished observation



ANNUAL
HIV CONFERENCE
of the Florida/Caribbean
AIDS Education and Training Center

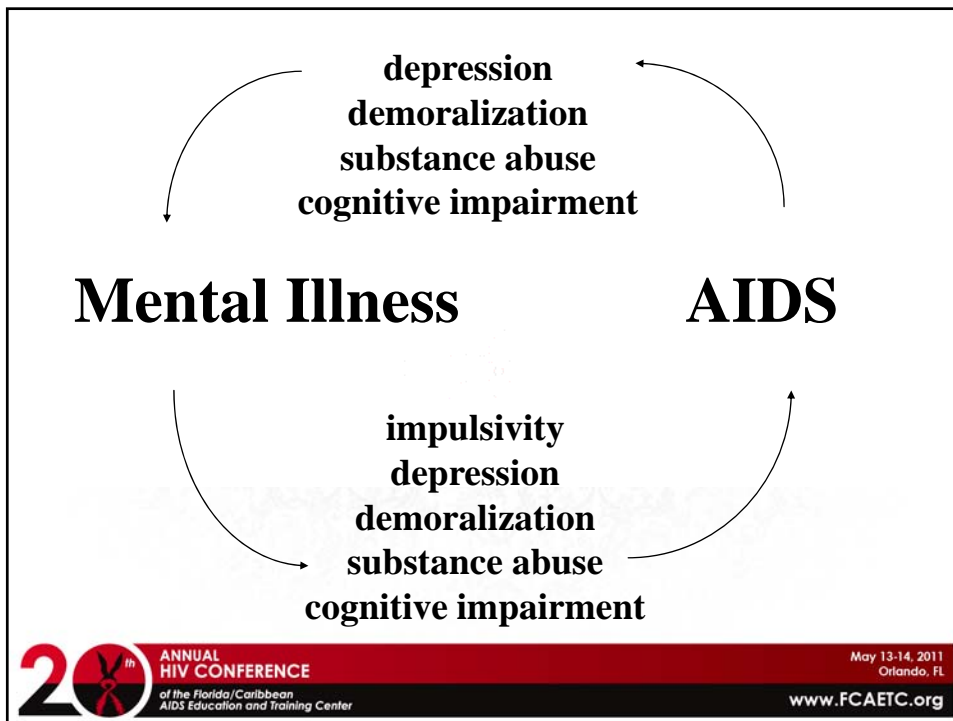
May 13-14, 2011
Orlando, FL

www.FCAETC.org



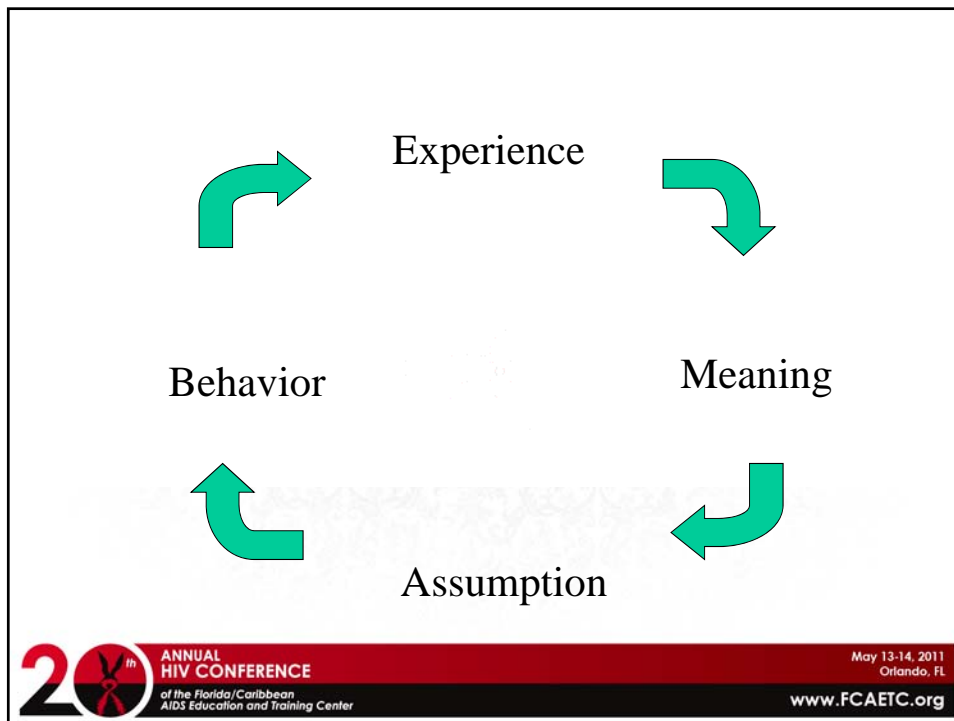
The Four Perspectives McHugh and Slavney

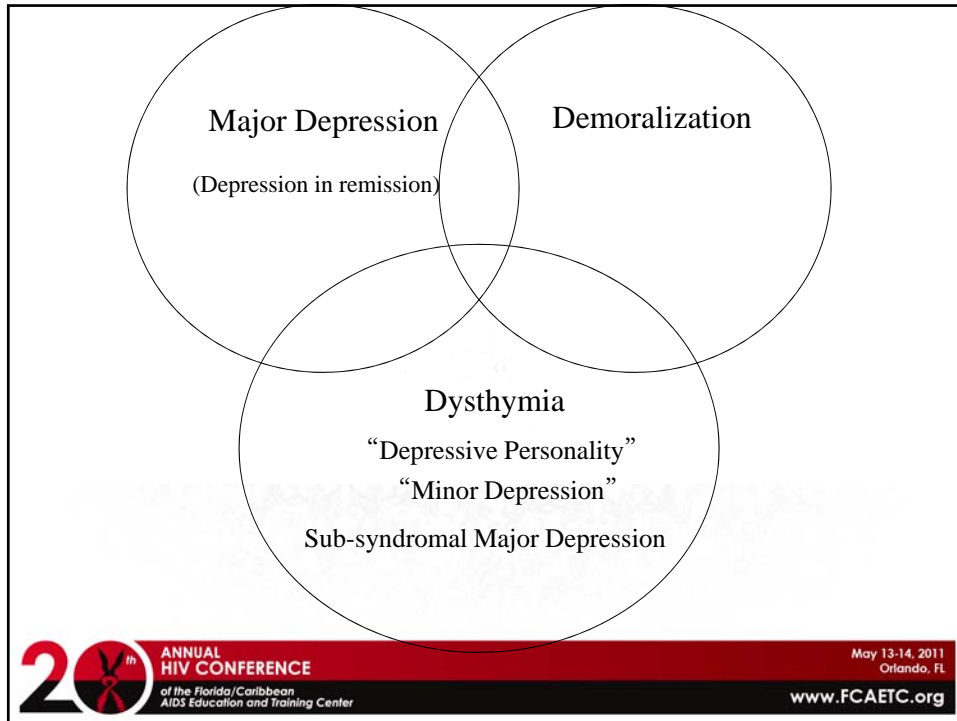
- **Disease**
- **Temperament**
- **Behavior**
- **Life Story**



Problems of life story

- An “assumptive” world
- Assumptions provoke experience
- Experience shapes assumptions
- The medium of analysis of these experiences is “meaning”
- Provides the “software operating system” for data and action
- Can be “rescripted” or rewritten





Differential Diagnosis of Depression

DEPRESSION
DELIRIUM
DEMENTIA
DEMORALIZATION

20th ANNUAL HIV CONFERENCE
of the Florida/Caribbean AIDS Education and Training Center
May 13-14, 2011
Orlando, FL
www.FCAETC.org

Depression diminishes

- **Mood**-the sense of baseline state of happiness that is usually present
- **Vital sense**-the sense of being well, healthy, energetic, alert and able
- **Self Attitude**-the sense of being good, of doing well, of effectiveness and utility to others



ANNUAL
HIV CONFERENCE
of the Florida/Caribbean
AIDS Education and Training Center

May 13-14, 2011
Orlando, FL

www.FCAETC.org

Anhedonia

- **Loss of reward** (pleasure, satiation or satisfaction) **associated with behaviors**
 - **Appetite Directed Behaviors**
 - Sleeping
 - Eating
 - Sex
 - **Function Directed Behaviors**
 - Work
 - Hobbies
 - Exercise



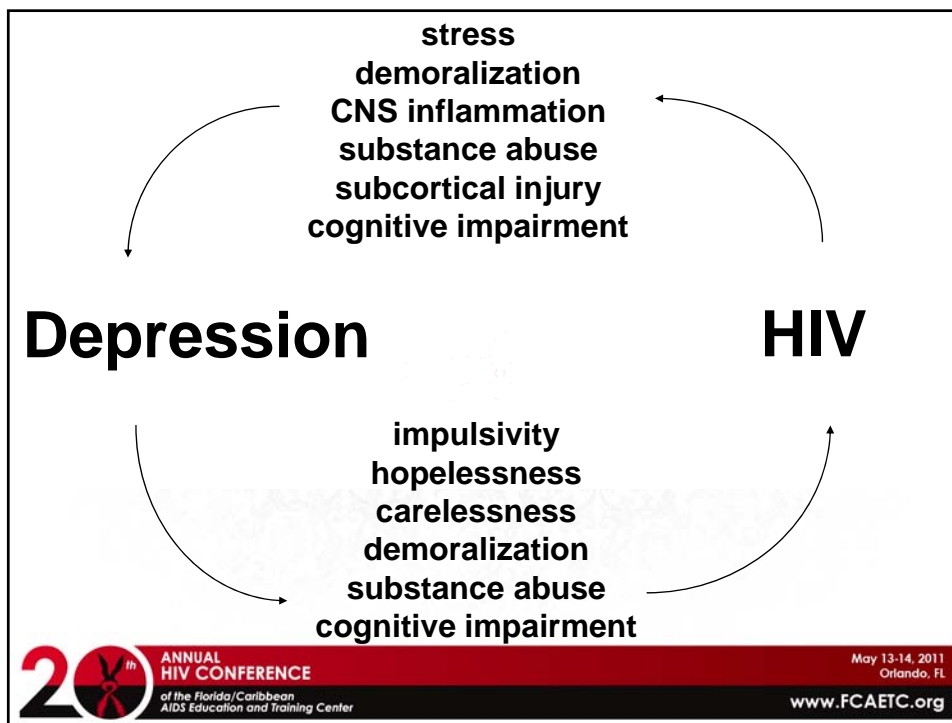
ANNUAL
HIV CONFERENCE
of the Florida/Caribbean
AIDS Education and Training Center

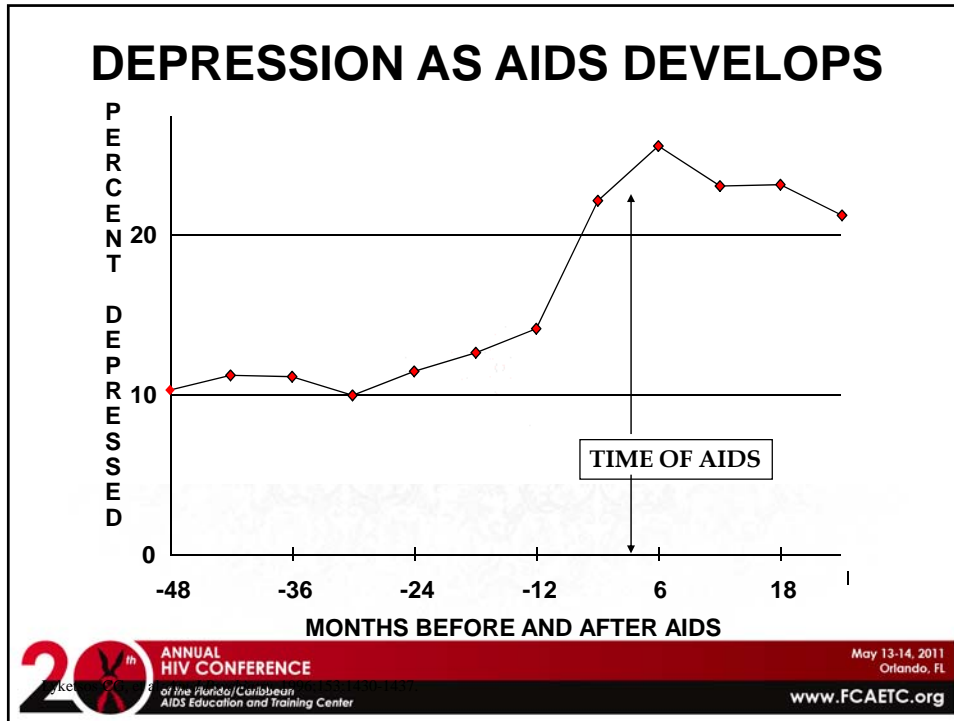
May 13-14, 2011
Orlando, FL

www.FCAETC.org

Disturbance of Neurophysiology


- **Sleep**
 - EARLY MORNING AWAKENING
 - Difficulty falling asleep
 - Disrupted sleep architecture
- **Appetite**
 - Change in food taste
 - Weight loss or gain
 - Immune function
- **G.I. function**





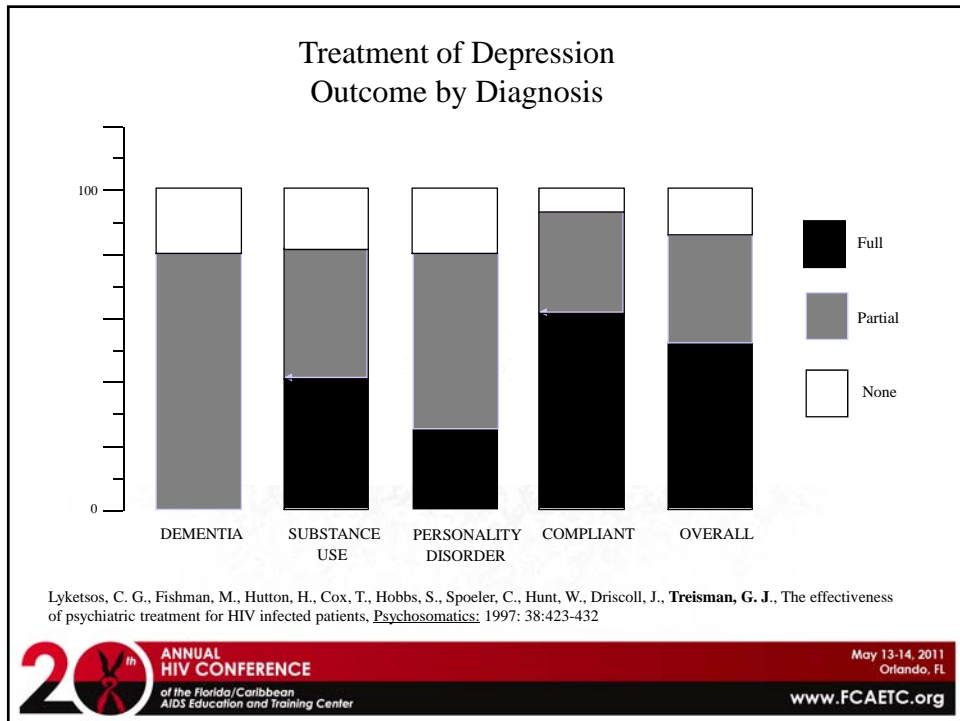
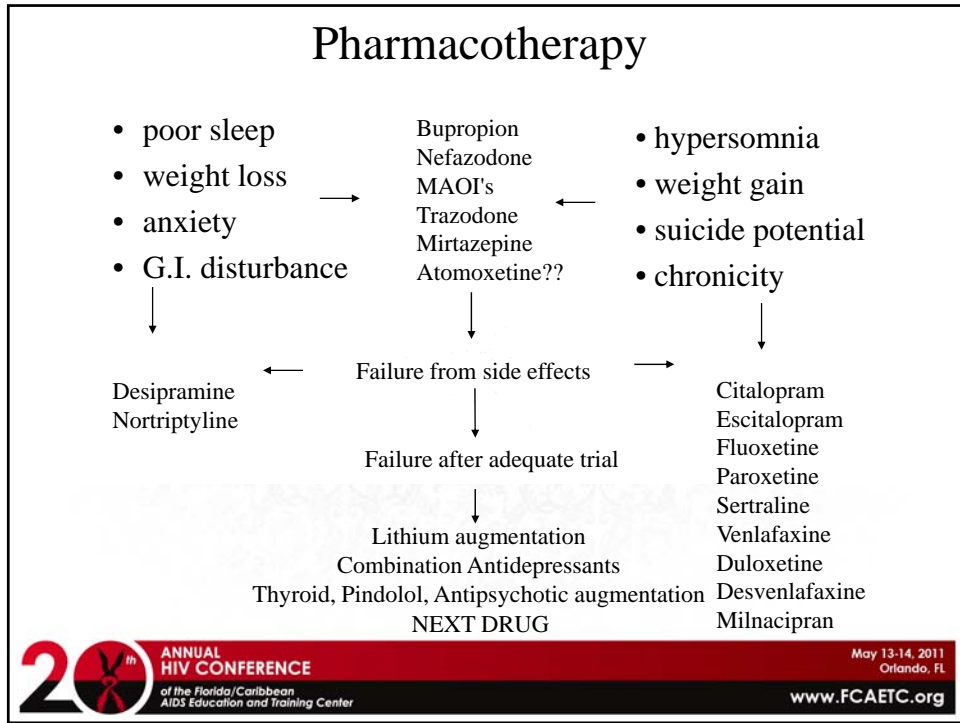
Differential Diagnosis of Depression

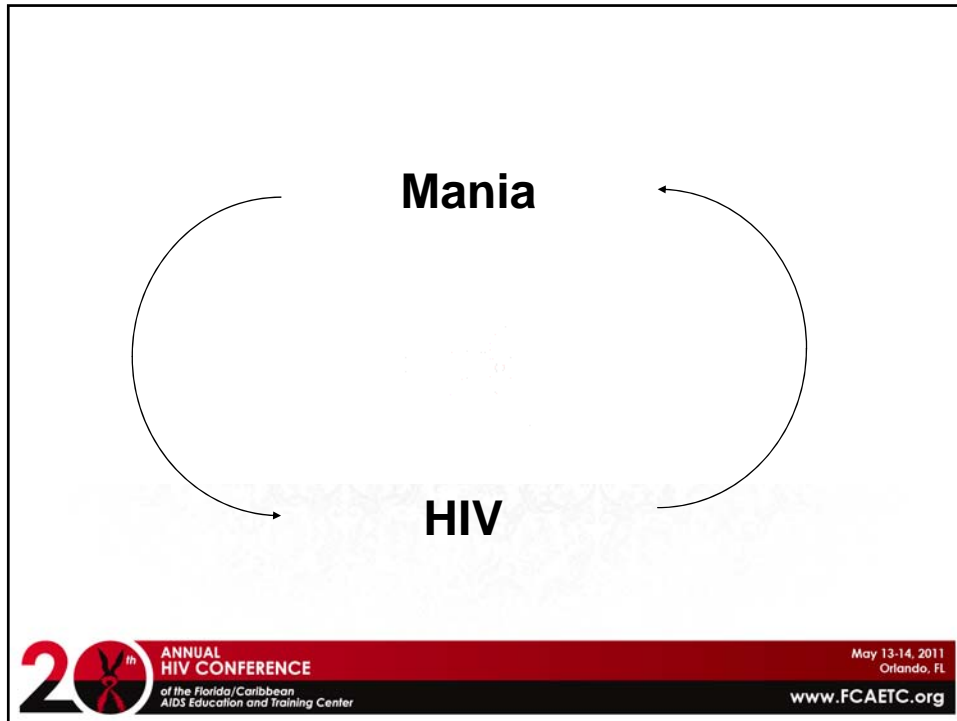
- DEPRESSION
- DELIRIUM
- DEMENTIA
- DEMORALIZATION



20th ANNUAL HIV CONFERENCE
of the Florida/Caribbean
AIDS Education and Training Center

May 13-14, 2011
Orlando, FL
www.FCAETC.org





CASE STUDY OF PATIENTS WITH HIV AND MANIA

	NEGATIVE HISTORY (N=7)	POSITIVE HISTORY (N=7)
AGE	33.6	36.0
SEX	7 male	5 male
RISK FACTOR	4 gay/2 IDU	4 IDU/3 gay
CD4<100 *	6/6	2/7
STAGE *	all AIDS	2 AIDS/5 HIV+
DEMENTIA *	all	none

* p<0.05 by fisher's exact test

20th ANNUAL HIV CONFERENCE
of the Florida/Caribbean AIDS Education and Training Center

May 13-14, 2011
Orlando, FL
www.FCAETC.org

The Four Perspectives McHugh and Slavney

- Disease
- Temperament
- Behavior
- Life Story

20th ANNUAL HIV CONFERENCE May 13-14, 2011
Orlando, FL
of the Florida/Caribbean
AIDS Education and Training Center www.FCAETC.org

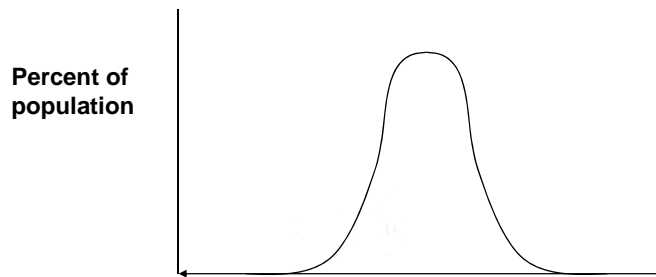


It is much more important to know what sort of patient has a disease than what sort of disease a patient has.

William Osler

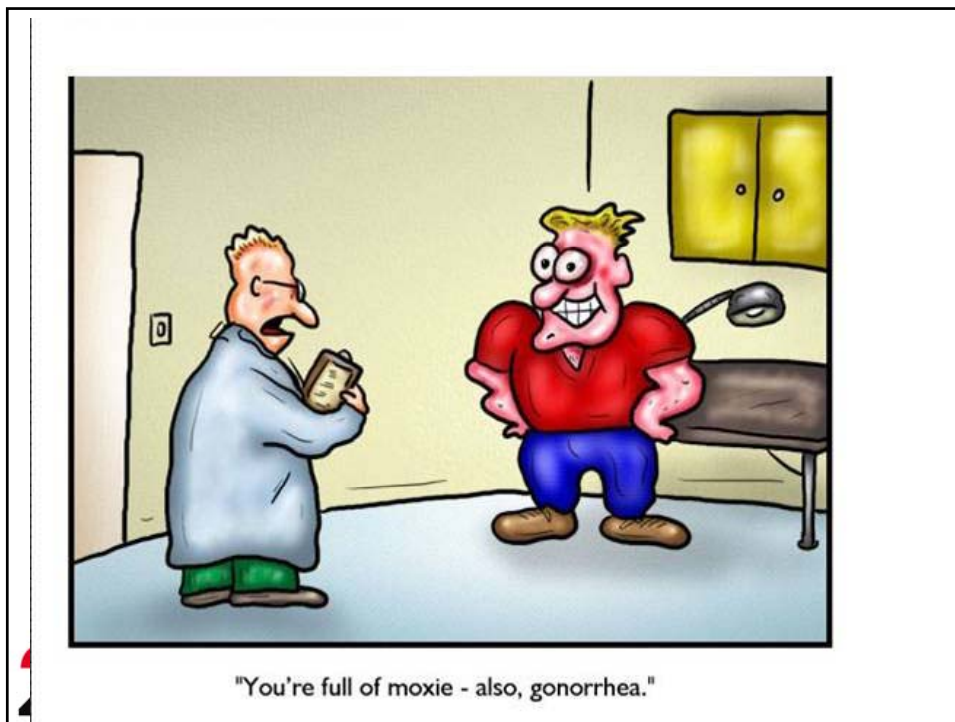


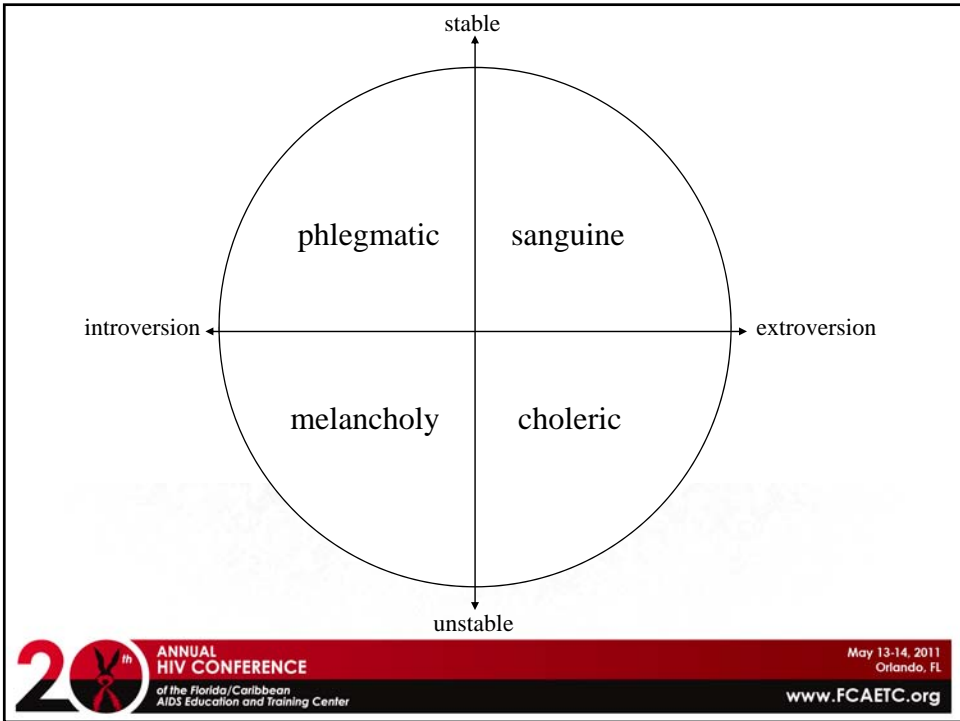
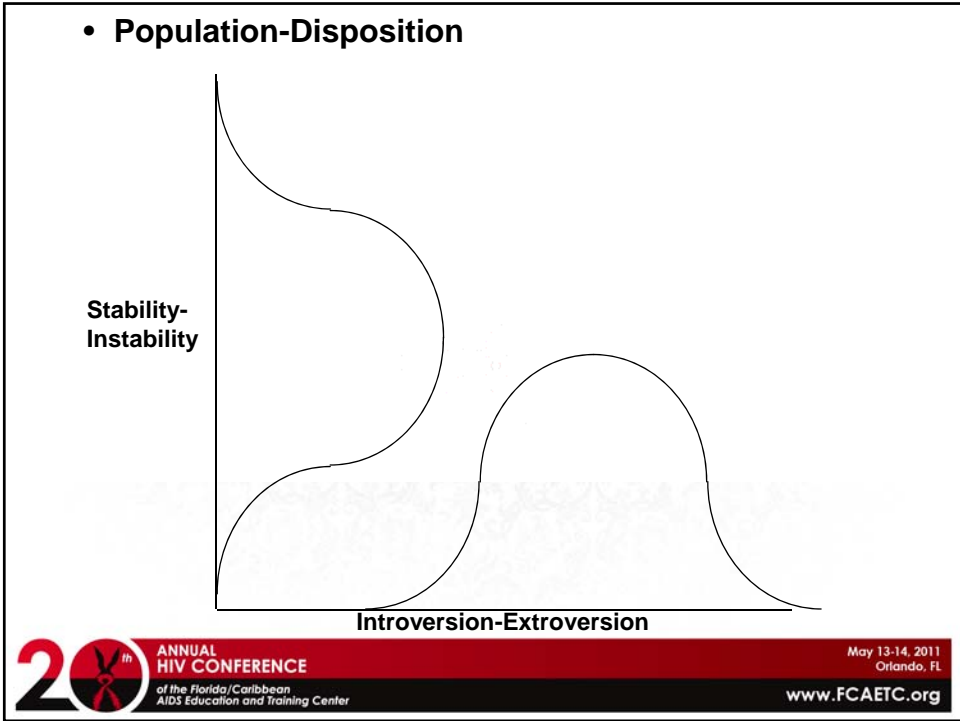
Simplified model of disposition



- Introversion
 - ◆ Punishment avoidant
 - ◆ Future directed
 - ◆ Function directed
- Extraversion
 - ◆ Reward directed
 - ◆ Present directed
 - ◆ Feeling directed









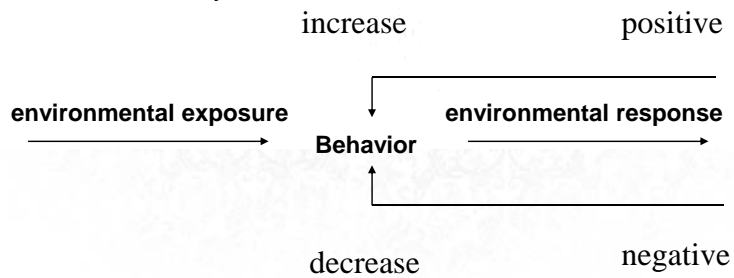
Motivated Behavior

- **The cycle of drive**
 - Craving
 - Behavior
 - Reinforcement
 - Satiation
- **Environmental Exposure**
 - Parental and societal input
- **Biological Factors**
 - genetic contribution
 - ? errors in drive, object specificity, or gross pathology

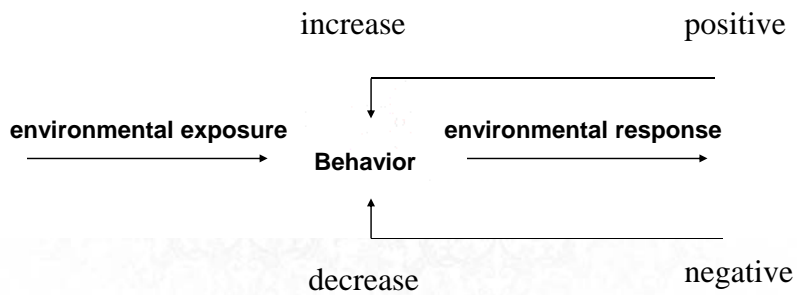
Law of effect

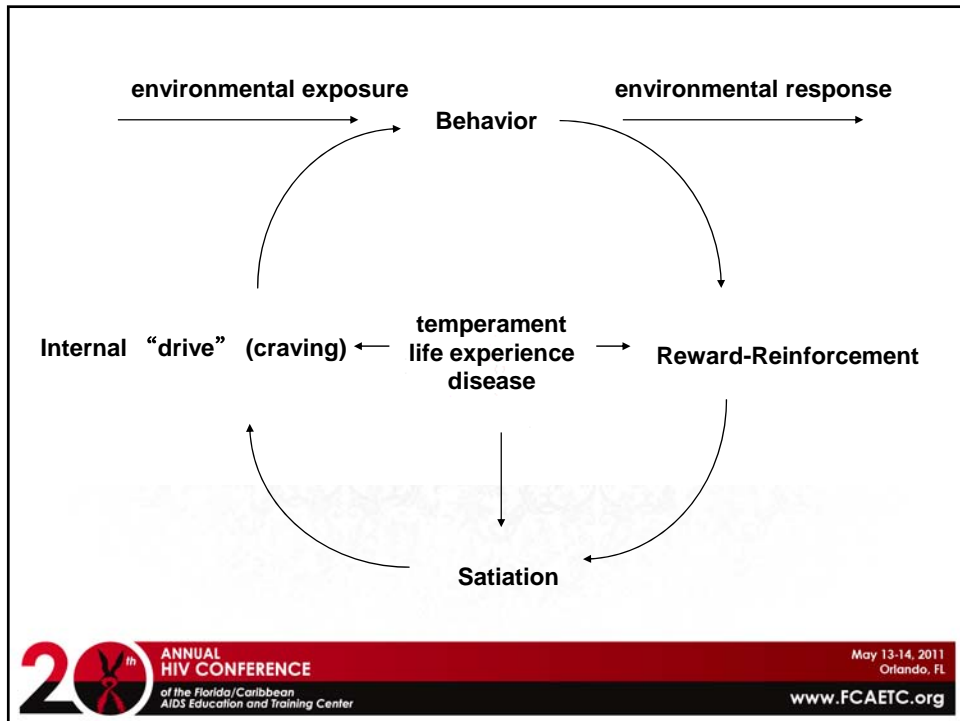
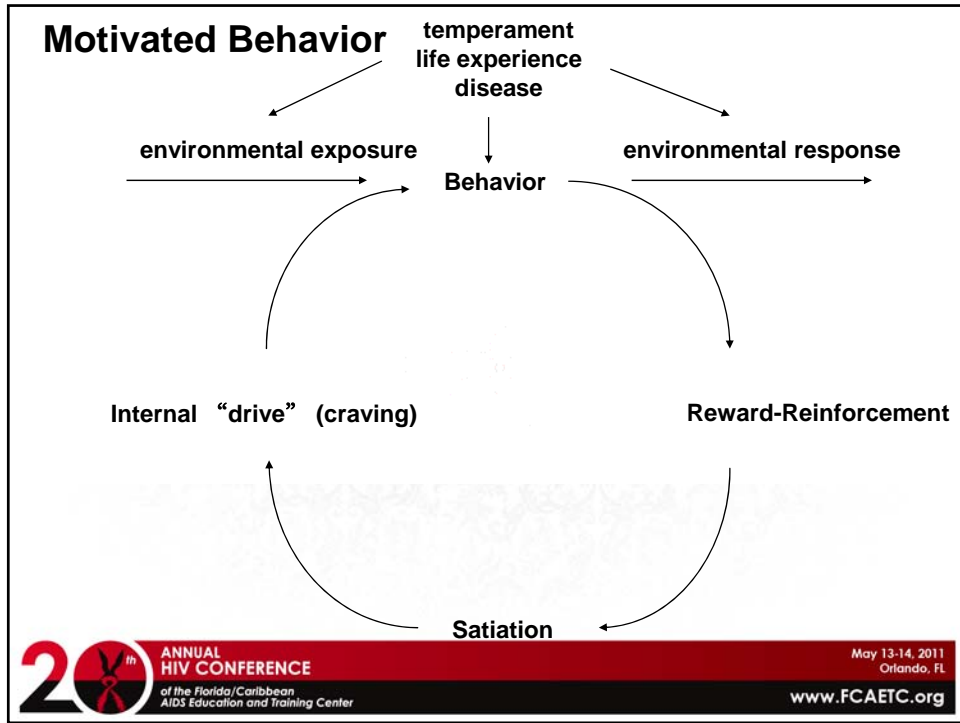
- ...probability of a behavior can be increased or decreased depending on its immediate consequence.

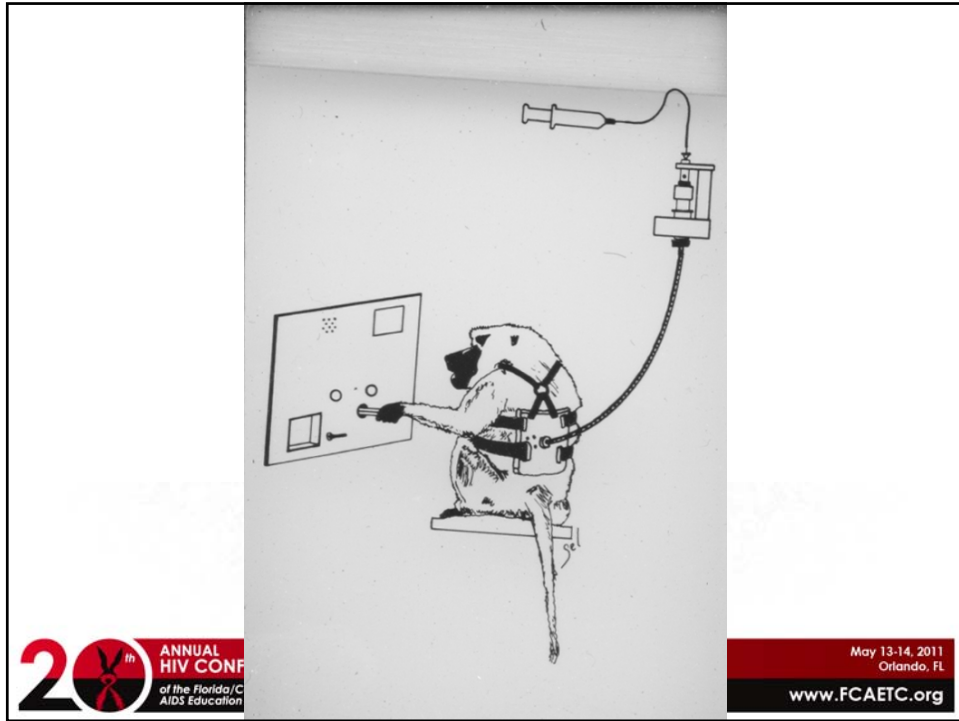
Thorndyke 1913



Behavior









Bobo remained free the rest of his life, although he did find it necessary to seek counseling.

20th ANNUAL HIV CONFERENCE
of the Florida/Caribbean AIDS Education and Training Center

May 13-14, 2011
Orlando, FL
www.FCAETC.org

Disclosure of Financial Relationships

This speaker has no significant financial relationships with commercial entities to disclose.

This slide set has been peer-reviewed to ensure that there are no conflicts of interest represented in the presentation.

20th ANNUAL HIV CONFERENCE
of the Florida/Caribbean AIDS Education and Training Center

May 13-14, 2011
Orlando, FL
www.FCAETC.org